

Claddagh Pub Road Race 4-mile Lawrence MA

Detail of Start, Finish & Splits

USATF Certification # MA06001JK (Expires Dec 31, 2016)
Measured 8 Feb 2006 by Justin Kuo jkuo@usatfne.org

Start on Essex St.



Start between 284 and 296
Essex St.



View from Start looking down Essex St.



Start opposite 281 Essex St.



1-mile split
at 231 Water
St.



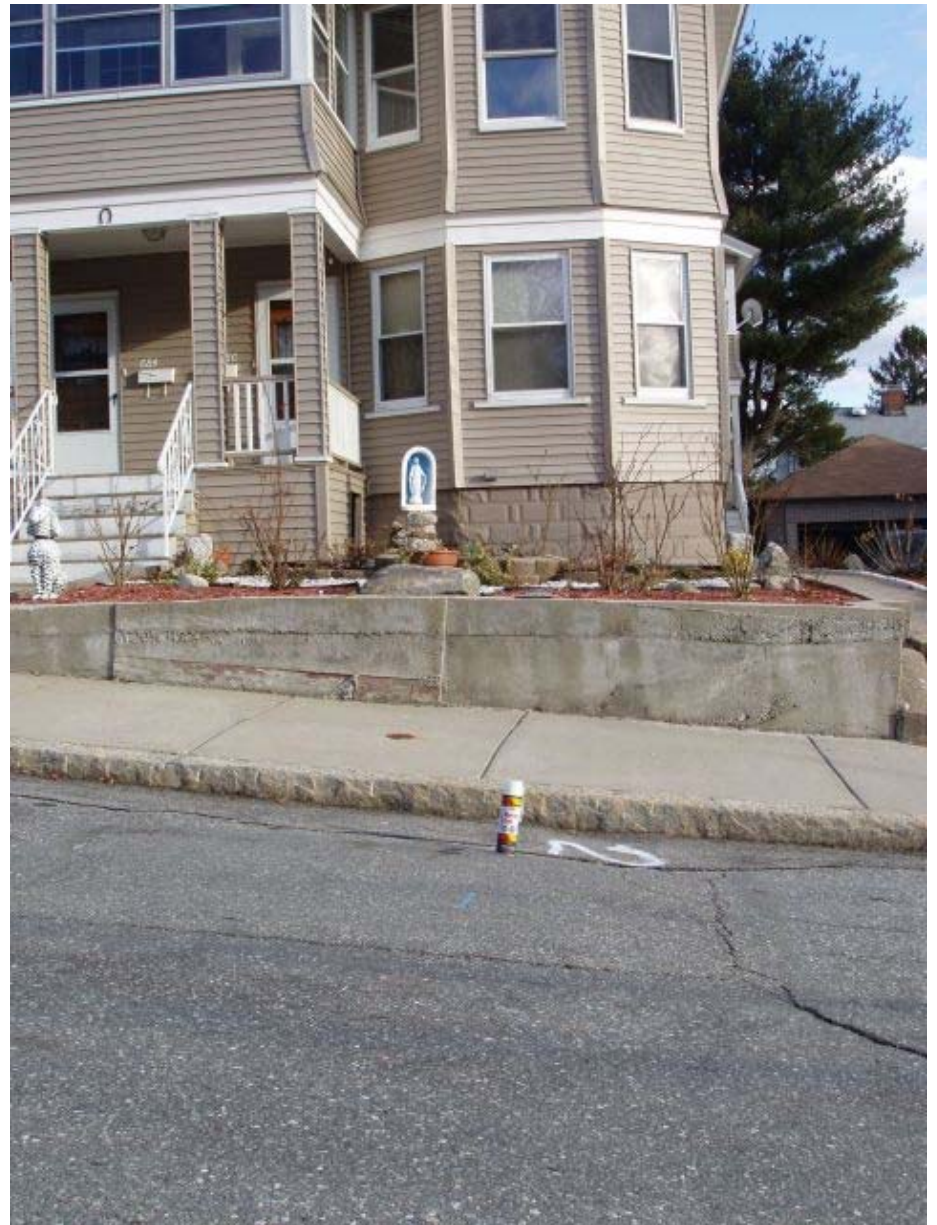
1-mile split
opposite
240-A
Water St.



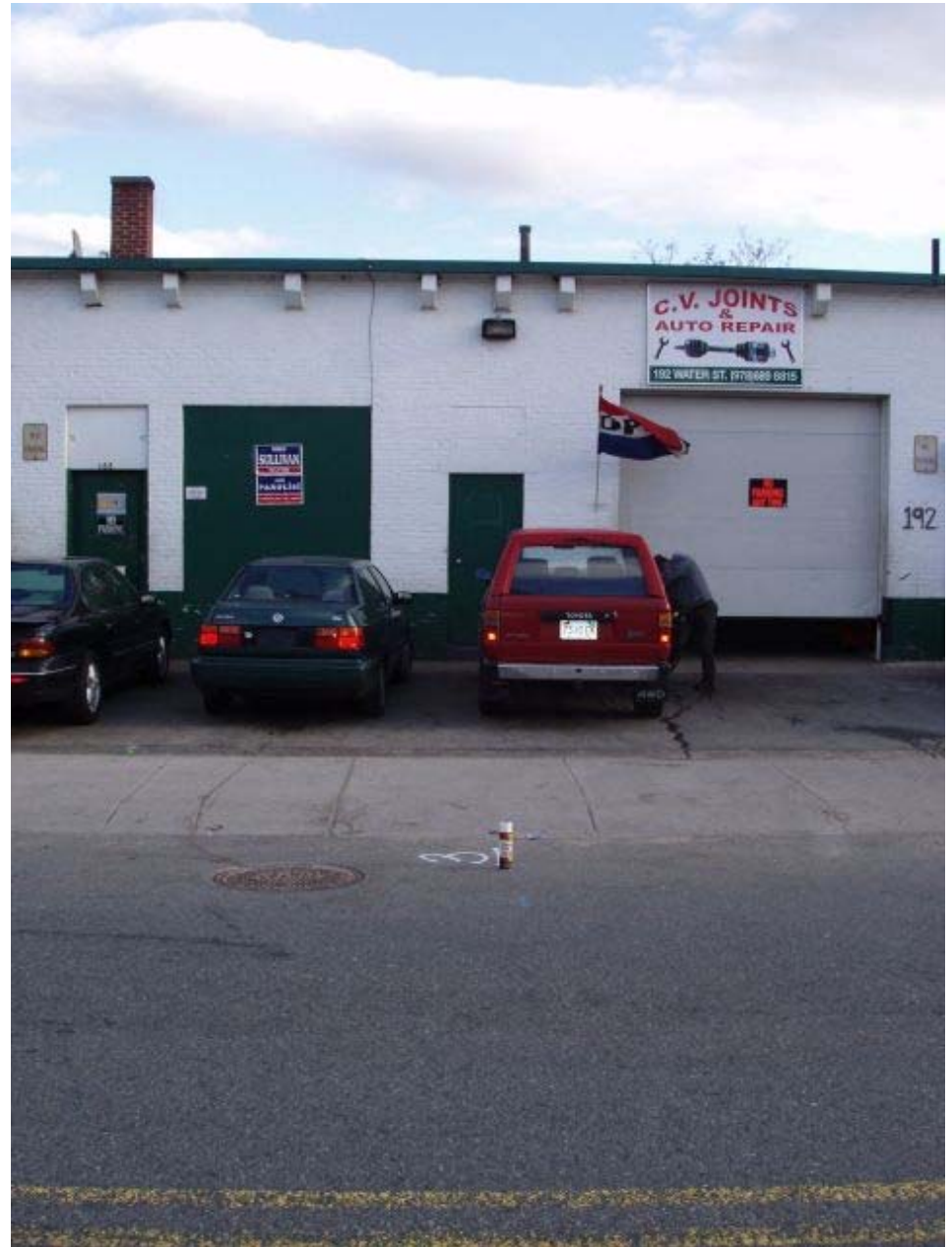
2-mile split,
opposite
685 Lowell
St.



2-mile split at
686 Lowell
St.



3-mile split
between 188
and 192
Water St.



3-mile split,
opposite
189 Water
St.



5-kilometer
split,
opposite 129
Water St.



5-kilometer
split at 136
Water St,
(Anna Marie
Cronin Girls
Club),
opposite UP
#1020



Finish on
Amesbury
St., 47.2'
before U.P.



Finish on Amesbury St.



Finish
opposite fire
hydrant at
intersection
Amesbury &
Methuen



Finish by
the
Claddagh
Pub
entrance on
Amesbury
St., 15.45'
past corner
of building.





Road Running Technical Council
USA Track & Field
Measurement Certificate



Name of the course _____ Distance _____

Location (state) _____ (city) _____

Type of course: road race calibration track Configuration: _____

Type of surface: paved _____ % dirt _____ % gravel _____ % grass _____ % track _____ %

Elevation above sea level) Start _____ Finish _____ Highest _____ Lowest _____

Straight line distance between start & finish _____ Drop _____ m/km Separation _____ %

Measured by (name, address, & phone) _____

Race contact (name, address, & phone) _____

Measuring Methods: bicycle steel tape electronic distance meter

Number of measurements of entire course: _____ Date(s) when course measured: _____

Race date: _____ Course paperwork submission date: _____

Replaces: _____ (if applicable) Certification code: _____

Notice to Race Director
 Use this Certification Code in **all** public
 announcements relating to your race.

Be It Officially Noted That

Based on examination of data provided by the above named measurer, the course described above and in the map attached is hereby certified as reasonably accurate in measurement according to the standards adopted by the Road Running Technical Council. If **any** changes are made to the course, this certification becomes void, and the course must then be recertified.

Validation of Course — In the event a National Open Record is set on this course, or at the discretion of USA Track & Field, a validation remeasurement may be required to be performed by a member of the Road Running Technical Council. If such a remeasurement shows the course to be short, then all pending records will be rejected and the course certification will be cancelled.

This certification expires on December 31 in the year

AS NATIONALLY CERTIFIED BY:

Date: _____

For more information, contact
Justin Kuo (617) 731-9889
#